

Photo 65 - 66 are same bullet hole. YOU CAN SEE THE LEAD BEGIN TO BLOW OUT.

IT EXPLODES ON IMPACT, PHOTO WAS TAKEN FURTHER DOWN SAME FENCE LINE.

BE HARD TO MISS, IT IS FAR MORE PROMINENT AND VISIBLE THAN PHOTO (85) IS!

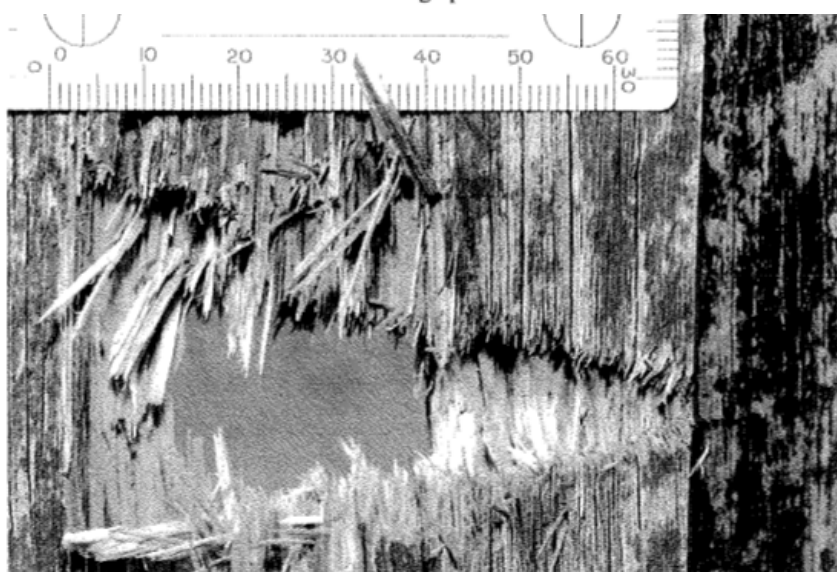
OP 55. DON'T SEE HOLE AT ALL, BECAUSE IT DIDN'T EXIST AT THAT "10.10.a.m."

"NOT FENCE AROUND CORNER EITHER" WHICH WE WILL GET TO SOON ENOUGH.

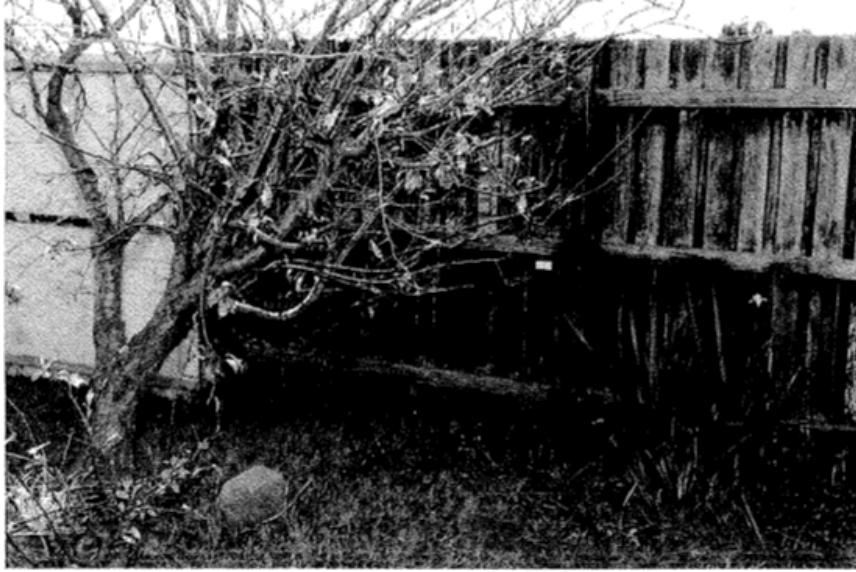
IT WAS "FIRED LATER THAT EVENING" confirmed in Loretta Collier's statement.



Photograph 65



Photograph 66



Photograph 67